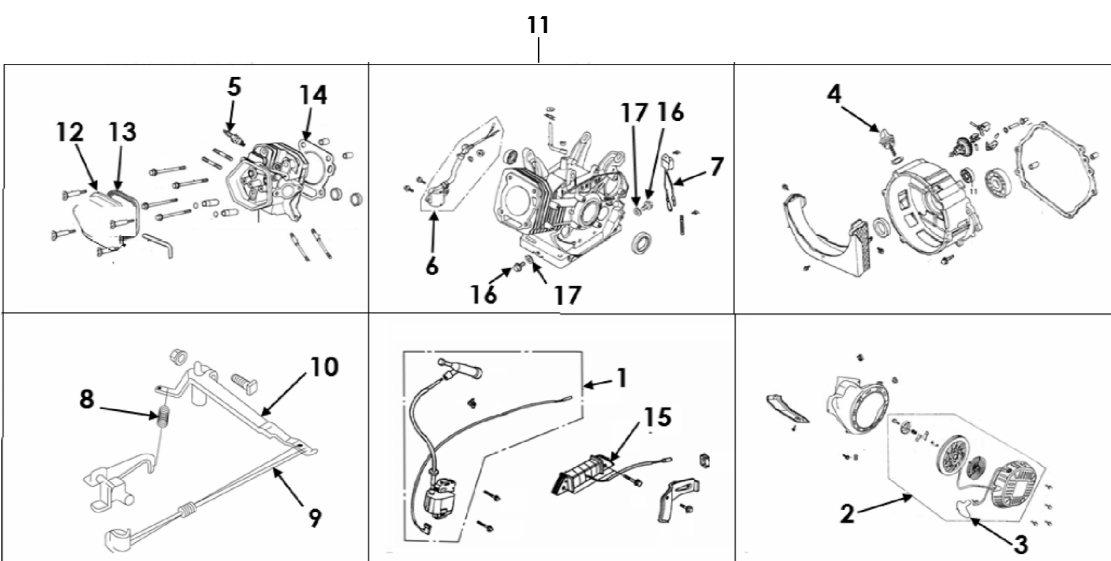


NOTES:

1. APPLICABLE DOCUMENTS:
ASME Y14.5M-1994, DIMENSIONING AND TOLERANCING
ASME Y14.38-1999, ABBREVIATIONS AND ACRONYMS
2. MATERIAL:
HEAT TREATMENT:
SURFACE FINISH:
COATING:
CLEANLINESS:
APPROX WEIGHT OF FINISHED PART:
3. SHEET TOLERANCE UNLESS OTHERWISE SPECIFIED:
X = +/- 0.8mm X.X = +/- 0.3mm X.XX = +/- 0.13mm



17	101074	A	OIL DRAIN WASHER	1	ea
16	101073	A	OIL DRAIN SCREW	1	ea
15	101037	A	CHARGING COIL ASSY	1	ea
14	100996	A	CYLINDER HEAD GASKET, 242cc	1	ea
13	100995	A	HEAD COVER GASKET	1	ea
12	100994	A	CYLINDER HEAD COVER	1	ea
11	100982	A	ENGINE COMPLETE, 242cc	1	ea
10	100966	A	GOVERNOR ARM, 242cc	1	ea
9	100965	A	GOVERNOR ANTI-SURGE SPRING	1	ea
8	100963	A	GOVERNOR SPRING, 242cc	1	ea
7	100947	A	OIL ALERT SENDER	1	ea
6	100946	A	OIL SHUTDOWN SWITCH	1	ea
5	100842	A	SPARK PLUG	1	ea
4	100841	A	OIL FILL DIPSTICK	1	ea
3	100840	A	ROPE AND HANDLE	1	ea
2	100839	A	RECOIL ASSEMBLY	1	ea
1	100837	A	IGNITION COIL, 242cc	1	ea
ITEM NO.	PART NO.	REV.	DESCRIPTION	QTY	UM

 NORTHSHORE <small>POWER SYSTEMS</small>		NORTHSHORE POWER SYSTEMS, LLC <small>NPSYSTEMS.COM</small>	
<small>UNLESS OTHERWISE SPECIFIED: THIRD ANGLE PROJECTION:</small> <small>INTERPRET GEOMETRIC TOLERANCING PER ASME Y14.5M-1994 DO NOT SCALE DRAWING</small>		<small>PROPRIETARY AND CONFIDENTIAL THE INFORMATION CONTAINED IN THIS DRAWING IS CONFIDENTIAL AND IS THE SOLE PROPERTY OF NORTHSHORE POWER SYSTEMS. ANY REPRODUCTION IN PART OR AS A WHOLE WITHOUT THE WRITTEN PERMISSION OF NORTHSHORE POWER SYSTEMS IS PROHIBITED.</small> <small>PART NAME:</small> ENGINE PARTS 242cc	
<small>DRAWN BY:</small> RCO <small>CHECKED BY:</small> <small>RELEASED BY:</small>	<small>DATE:</small> 2008-07-08 <small>SIZE:</small> C	<small>PART NO.:</small> 101397A	<small>SCALE:</small> 1:1 <small>METRIC</small> <small>SHEET 1 OF 1</small>