

HX Series Transfer Switch Remote Annunciator

Model Number:

G0070210

Remote Annunciator Panel

Description

The Remote Annunciator Panel provides remote monitoring and annunciation for a single HX Transfer switch with 11 LEDs. Works on all legacy HX Transfer Switches with the HXC-100 Control.*

This Remote Annunciator allows for ATS Transfer Test mode, and features a silence for existing alarm. Any new alarm will re-arm and the alarm horn will sound. Fault indication mirrors the HX fault indication and would indicate annunciator failure.

Communications to the HX is RS485.

All models require battery power (+12 or +24 VDC) sourced from the generator battery or other source.

The Remote Annunciator Panel complies with NFPA 99 and NFPA 110.



Image used for illustrative purposes only

*When software is at version 1.23 or later.

FEATURES & BENEFITS

INDICATIONS

- Comms OK
- Alarm/Fault
- Not in Auto
- Source 1 Available
- Source 1 Connected
- Source 2 Available
- Source 2 Connected
- Time Delay Active

- Exercise Active
- Loadshed Active
- Test Mode (ATS Transfer Test)

KEYBOARD BUTTONS

- ATS Transfer Test
- Silence Horn
- LED Lamp Test

AUDIBLE HORN CONDITIONS

- Comms Failure
- Alarm/Fault
- Not in Auto
- Loadshed Active

3R COVER KIT: G0098870

HX Series Transfer Switch Remote Annunciator

Technical Specifications

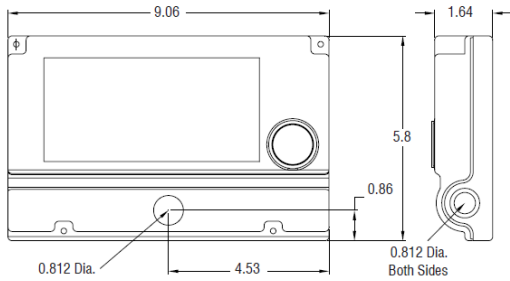
ENVIRONMENTAL SPECIFICATIONS

- Operating Temperature:** -25° C to 60° C
- Humidity:** 0 to 95% Non-Condensing
- Power Supply:** +12 or +24 Volts DC
- Power Usage:** 6 Watts Typical
- RS485 Communications:** Fully Isolated Twisted Pair Cable with Shield
- RS485 Length:** 4,000 ft (1,219 m)
- Fault Relay Contact Rating:** 30 VDC, 1 Amp
- Enclosure Rating:** NEMA 1
- Alarm Horn:** 90 dB @ 10 cm

Mounting Options

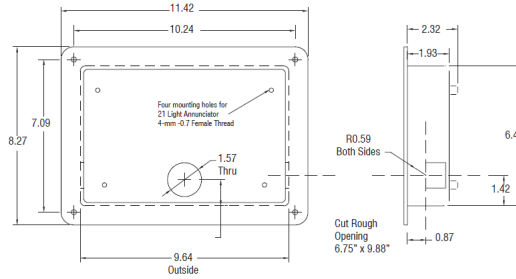
SURFACE MOUNT ANNUNCIATOR

The HX Remote Annunciator can mount to a flat surface with connections through the 0.812 inch diameter knockout on the back surface or through 0.812 inch diameter knockouts on sides as shown.



FLUSH MOUNT ANNUNCIATOR

This Flush Mount Box is recessed into the wall opening and the surface mount annunciator mounts to the (4) 4 mm screw holes on the back surface. After wire connections are made the front annunciator cover is attached.



All other trademarks are the property of their respective owners.

* All measurements are approximate and for estimation purposes only. Specification characteristics may change without notice. Please contact a Honeywell Distributer for detailed installation drawings.

©2022 Generac Power Systems, Inc. All rights reserved. Specifications subject to change without notice.