

HX611 Series Transfer Switch 600 Amps

Contactor Type · Open and Delayed Transition

CODES AND STANDARDS



cETL Listed



NFPA 70, 99, 110



NEC 700, 701, 702, 708

DESCRIPTION

The Honeywell contactor type transfer switches are double-throw robust switch construction with inherent interlocks to ensure safe positive transfer between power sources. The contacts are silver composite for long life, resisting pitting or burning. The switches are rated for full load transfers in mission critical, emergency, legally required, and optional power systems.

The microprocessor based controller provides the customers with the flexibility to program a comprehensive group of set points to match the application needs. The controller has two programmable inputs and one programmable output as standard and is available with an optional expansion board for up to four programmable inputs and outputs. The LCD displays real time and historical information with time-stamped events. The integrated plant exerciser can be configured in off, daily, day of week, biweekly, and monthly intervals with user selectable run time. Standard features of the controller include three phase sensing on both sources, phase unbalance, phase reversal, load shed, emergency inhibit, and communications.



Image used for illustration purposes only

FEATURES & BENEFITS

- Automatic Transfer Switch
- Single or Three Phase
- NEMA 1, 3R, 4X, or 12
- 2, 3, or 4 Poles
- Open Inphase and or Open with Delayed Transition
- 600A up to 600V VAC, 60 Hz, 100% current rated
- ETL Listed to UL 1008
- High Withstand and Closing Ratings
- 3-Cycle Rated for Easy Upstream Breaker Coordination

HX611 Series Transfer Switch 600 Amps Standard Features

GENERAL

- Small Footprint, Results in Easy Mounting and Installation for Reduced Time and Costs
- Wall Mount
- Cable Entry is Top or Bottom
- Double-Throw, Stored Energy Transfer Mechanism
- Can be Electrically Isolated while Energized
- Graphical LCD-Based Display for Programming, System Diagnostics and Help Menu Display Mimic
- Diagram with Source Available and Connected LED Indicator
- Method of Transfer: Open with Inphase Transition
- Mechanically Interlocked to Prevent Connection of Both Sources
- Modbus[®] RTU Communications
- HXC 100 Controller
- Operating Temperature: -4° to 158°F (-20° to 70°C)
- Removable Top and Bottom Plates for Ease of Entry
- Voltage Agnostic*
- High Withstand and Closing Ratings
- Heater Kit Standard on all 3R Enclosures
- Auxiliary Output Includes: Two Wire Start, Signal Before Transfer, Fault, and a Programmable Relay Output

- Auxiliary Input Includes: Permissive Inputs (24 VDC)
- General Alarm Indication
- 2 Year Standard Warranty

VOLTAGE AND FREQUENCY SENSING

- Three Phase Under and Over Voltage Sensing on Normal and Emergency Sources
- Under and Over Frequency Sensing on Normal and Emergency
- Selectable Settings: Single or Three Phase Voltage
- Sensing on Normal, Emergency and Load 50 or 60 Hz
- Phase Sequence Sensing for Phase Sensitive Loads

START CIRCUIT

- 2-Wire Start
- 3-Wire Start Form C Contact for Circuit Monitoring

DIGITAL OUTPUTS

- Switch Position Indication (2 Form C)
- Signal Before Transfer (Elevator)
- General Alarm

DIGITAL INPUTS

- Emergency Inhibit (Permissive & Load Shed)
- Go to Emergency
- Manual Generator Retransfer

CONTROLS

- Front Programmable Control Reduces PPE Needs and Arc Flash Hazard
- Built in Battery Backup - Increases Switch Reliability and Reduces Switch Transition Time to Alternate Source
- Battery Backup Able to Power the Controller for up to 60 Minutes in the Event of No Source Availability
- Generator Battery Backup for Controller
- Accessible USB Port for Easy Data Downloads, Firmware Updates without Requiring PPE, Reducing the Risk of Arc Flash
- All Amp Nodes Offered with Delayed Transition
- Heater Programmable through Control for Desired Temperature and Humidity Settings
- Front Accessible Customer Connections
- Time-Stamped Event History Log
- Programmable Exerciser - Daily, Weekly, Bi-Weekly, Monthly

*480 V 3-Wire Systems and all 600 V systems must be specified at time of ordering for Transformer Kit to be included

Available Options

- Time Delay in Neutral Transition (TDN) or Inphase with a Default to Time Delay in Neutral Transfer
- Remote Annunciator
- Chicago Code Kit
- 3R Padlockable Cover for Controller (Standard on 3R Enclosure)
- CTs for Integrated Metering
- Heater Option for Temperature and Humidity Control (Standard on 3R Enclosure)
- Expandable Input/Output Board Module Includes: 4 Relay Outputs and 4 Optically Isolated Inputs

- 2 Year Extended Limited Warranty
- 5 Year Basic Limited Warranty
- 5 Year Extended Limited Warranty
- 7 Year Extended Limited Warranty
- 10 Year Extended Limited Warranty

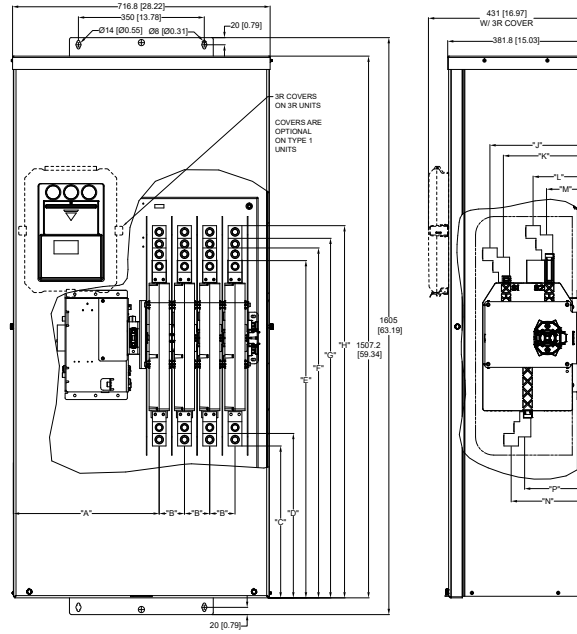
CONVERSION KITS

- 480 V Transformer Kit for 3-Wire Systems
- 600 V Transformer Kit
- NEMA Type 1 to 3R Kit

ENGINEERED KITS

- Transient Voltage Surge Suppressor (TVSS)
- Manual Generator Retransfer Switch
- Go to Emergency Switch

HX611 Series Transfer Switch 600 Amps Unit Dimensions*



Non-Service Entrance Rated, Contactor Type, Open and Delayed Transition, 600 A

Description	in (mm)														Cu/Al					lbs (kg)
	A (Height)	B (Height)	C (Width)	D (Depth)	E (Dim)	F (Dim)	G (Dim)	H (Dim)	J (Dim)	K (Dim)	L (Dim)	M (Dim)	N (Dim)	P (Dim)	Normal 75 °C Wire	Standby Source 75 °C Wire	Load 75 °C Wire	Neutral Connection	Ground Connection	Weight
600A 2 & 3 Pole	18.73 (475.7)	2.80 (70.3)	16.60 (422.6)	12.00 (457.5)	36.00 (938.5)	38.30 (973.4)	39.40 (1000.5)	40.80 (1035.4)	10.40 (264.1)	8.90 (226.8)	1.73 (144.1)	4.20 (106.8)	8.10 (205.1)	6.60 (167.8)	(2) 750 Kcmil - 2	(2) 750 Kcmil - 2	(2) 750 Kcmil - 2	(8) 350 Kcmil - 6	(5) 350 Kcmil - 6	245 (111)
600A 4 Pole	15.97 (405.7)	2.80 (70.3)	16.60 (422.6)	12.00 (457.5)	36.00 (938.5)	38.30 (973.4)	39.40 (1000.5)	40.80 (1035.4)	10.40 (264.1)	8.90 (226.8)	1.73 (144.1)	4.20 (106.8)	8.10 (205.1)	6.60 (167.8)	(2) 750 Kcmil - 2	(2) 750 Kcmil - 2	(2) 750 Kcmil - 2	(8) 350 Kcmil - 6	(5) 350 Kcmil - 6	256 (116)

UL 1008 Withstand and Closing Ratings

Ampere Rating	3-Cycle Rating (kA)	Fuse Rating (Class L)
600	50	200 kA

* All measurements are approximate and for estimation purposes only. Specification characteristics may change without notice. Please contact a Honeywell Distributor for detailed installation drawings

©2022 Generac Power Systems, Inc. All rights reserved. Specifications subject to change without notice.

Generac Power Systems, Inc.
 S45 W29290 Hwy 59
 Waukesha, WI. 53189
 1.855.GEN.INFO
 www.honeywellgenerators.com

The Honeywell trademark is used under license from Honeywell International Inc. Honeywell International Inc. makes no representation or warranties with respect to this product. This product is manufactured by Generac Power Systems, Inc., Waukesha, WI. 53189, USA.

A0002155905 | Rev B | 03/2022

