

STANDBY GENERATOR

130 kW

LIQUID-COOLED GENERATOR SET

Standby Power Rating

Model HT130 - 130 kW 60Hz



*Built in the USA using domestic and foreign parts

INCLUDES

- Two-Line LCD Tri-lingual Digital Sync™ Controller
- Electronic Governor
- Closed Coolant Recovery System
- Flexible Fuel Line Connector
- UV/OzoneResistant Hoses
- Mobile Link™ Cellular Monitoring System*
- Sound Attenuated Aluminum Enclosure
- CA/MA Emissions Compliant
- Natural Gas or LP Gas Operation
- 2 Year Limited Warranty
- UL 2200 Listed

* Download the free Mobile Link App at



FEATURES

- **INNOVATIVE DESIGN & PROTOTYPE TESTING** are key components of our success in "IMPROVING POWER BY DESIGN." But it doesn't stop there. Total commitment to component testing, reliability testing, environmental testing, destruction and life testing, plus testing to applicable CSA, NEMA, EGSA, and other standards, allows you to choose Honeywell generators with the confidence that these systems will provide superior performance.
- **SOLID-STATE, FREQUENCY COMPENSATED VOLTAGE REGULATION** This state-of-the-art power maximizing regulation system is standard on all Honeywell models. It provides optimized FAST RESPONSE to changing load conditions and MAXIMUM MOTOR STARTING CAPABILITY by electronically torque-matching the surge loads to the engine. Digital voltage regulation at $\pm 1\%$.
- **SINGLE SOURCE SERVICE RESPONSE** from our extensive dealer network provides parts and service know-how for the entire unit, from the engine to the smallest electronic component.
- **Honeywell TRANSFER SWITCHES** The Honeywell generator line offers its own transfer systems and controls for total system compatibility.
- **TEST CRITERIA**
 - ◆ PROTOTYPE TESTED
 - ◆ SYSTEM TORSIONAL TESTED
 - ◆ NEMA MG1-22 EVALUATION
 - ◆ MOTOR STARTING ABILITY

130 kW

LIQUID-COOLED GENERATOR SET

Application & Engineering Data

GENERATOR SPECIFICATIONS

• Type	Synchronous
• Rotor Insulation	Class H
• Stator Insulation	Class H
• Telephone Interference Factor (TIF)	<50
• Alternator Output Leads Phase 3	6/4 wire
• Bearings	Sealed Ball
• Coupling	Gear Drive
• Load Capacity (Standby Rating)	130 kW
• Excitation System	Brushless

ENGINE SPECIFICATIONS

• Make	Generac
• Model	V-type
• Cylinders	10
• Displacement	6.8 Liter
• Bore	3.55
• Stroke	4.17
• Compression Ratio	9:1
• Intake Air System	Naturally Aspirated
• Lifter Type	Hydraulic

GOVERNOR SPECIFICATIONS

• Type	Electronic
• Frequency Regulation	Isochronous
• Steady State Regulation	± 0.25%

VOLTAGE REGULATION

• Type	Full Digital
• Sensing	Three Phase
• Regulation	± 0.25%

GENERATOR FEATURES

- Revolving field heavy duty generator
- Directly connected to the engine
- Operating temperature rise 120 °C above a 40 °C ambient
- Insulation is Class H rated at 130 °C rise
- All models are fully prototype tested

ENGINE LUBRICATION SYSTEM

• Oil Pump	Gear
• Oil Filter	Full flow spin-on cartridge
• Crankcase	5 Quarts

ENGINE COOLING SYSTEM

• Type	Closed
• Water Pump	Belt driven
• Fan Speed	1670
• Fan Diameter	26 inches
• Fan Mode	Puller

FUEL SYSTEM

• Fuel Type	Natural gas, propane vapor
• Carburetor	Down Draft
• Secondary Fuel Regulator	Standard
• Fuel Shut Off Solenoid	Standard
• Operating Fuel Pressure	11" - 14" H ₂ O

ELECTRICAL SYSTEM

• Battery Charge Alternator	12V 30 Amp
• Static Battery Charger	12V, 2 Amp
• Recommended Battery	Group 24F, 12V, 525CCA
• System Voltage	12 Volts

ENCLOSURE FEATURES

- Aluminum all weather protective enclosure options available – Ensures protection against mother nature. Electrostatically applied textured epoxy paint for added durability.
- Enclosed critical grade muffler – Quiet, critical grade muffler is mounted inside the unit to prevent injuries.
- Small, compact, attractive – Makes for an easy, eye appealing installation.
- SAE – Sound attenuated enclosure ensures quiet operation.

Rating definitions - Standby: Applicable for supplying emergency power for the duration of the utility power outage. No overload capability is available for this rating. (All ratings in accordance with BS5514, ISO3046 and DIN6271). (All ratings in accordance with BS5514, ISO3046, ISO8528, SAE J1349 and DIN6271).

Operating Data

KW RATING (LP/NG)		130/130			
ENGINE SIZE		6.8 Liter V-10			
GENERATOR OUTPUT VOLTAGE/KW - 60Hz		kW LPG	AMP	kW Nat. Gas	AMP CB Size (Both)
120/240V, 1-phase, 1.0 pf		130	542	117	488 600
120/208V, 3-phase, 0.8 pf		130	451	122	423 500
120/240V, 3-phase, 0.8 pf		130	391	122	367 450
277/480V, 3-phase, 0.8 pf		130	195	122	183 225
GENERATOR LOCKED ROTOR KVA AVAILABLE @ VOLTAGE DIP OF 35%					
Single phase or 208-240 3-phase		270			
480V 3-phase		320			
ENGINE FUEL CONSUMPTION (Natural Gas) (Propane)		Natural Gas (ft ³ /hr)	Propane (gal/hr.)		(ft ³ /hr)
Exercise cycle		135	1.4		54.5
25% of rated load		482	5.3		193
50% of rated load		927	10.3		373
75% of rated load		1292	14.3		520
100% of rated load*		1786	19.8		719
For Btu content, multiply ft ³ /hr x 2520 (LP) or ft ³ /hr x 1000 (NG)					
ENGINE COOLING					
Air flow (inlet air including alternator and combustion air)		ft ³ /min.	6,450		
System coolant capacity		US gal.	4.5		
Heat rejection to coolant		BTU/hr.	496,000		
Max. operating air temp. on radiator		°C (°F)	60 (150)		
Max. ambient temperature		°C (°F)	50 (140)		
COMBUSTION AIR REQUIREMENTS					
Flow at rated power 60 Hz		cfm	336		
SOUND EMISSIONS IN DBA					
Exercising at 7 meters		69			
Normal operation at 7 meters		75			
EXHAUST					
Exhaust flow at rated output 60 Hz		cfm	1,119		
Exhaust temp. at muffler outlet		°C (°F)	521 (970)		
ENGINE PARAMETERS					
Rated synchronous RPM		60 Hz	2,970		
POWER ADJUSTMENT FOR AMBIENT CONDIIONS					
Temperature Deration		3% for every 10 °C above - °C	25		
		1.65% for every 10 °F above - °F	77		
Altitude Deration		1% for every 100 m above - m	183		
		3% for every 1000 ft. above - ft.	600		

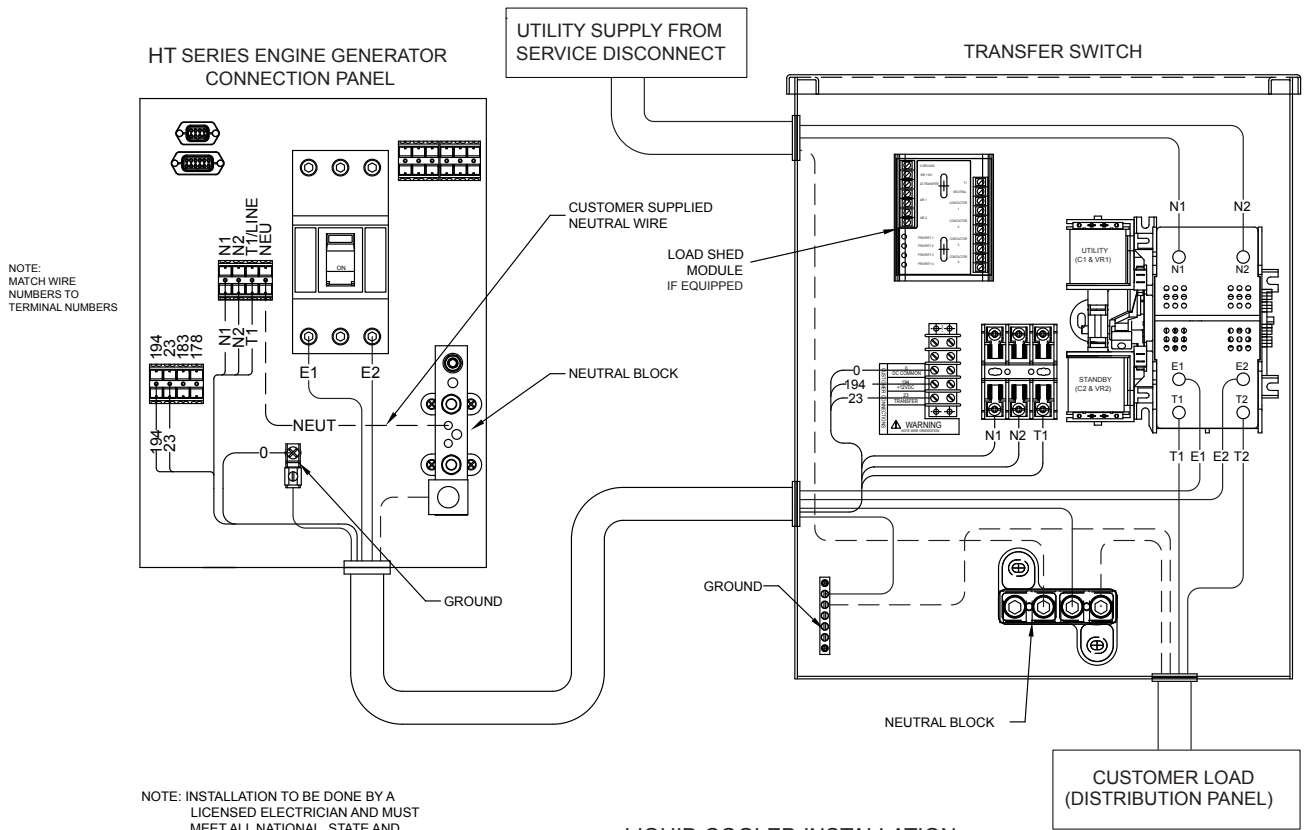
Refer to "Emissions Data Sheets" for maximum fuel flow for EPA and SCAQMD permitting purposes.

RATING: All three phases units are rated at 0.8 power factor. All single phase units are rated at 1.0 power factor. STANDBY RATING: Standby ratings apply to installations served by a reliable utility source. The standby rating is applicable to varying loads for the duration of a power outage. There is no overload capability for this rating. Ratings are in accordance with ISO-3046-1. Design and specifications are subject to change without notice.

130 kW

LIQUID-COOLED GENERATOR SETS

Interconnections



CIRCUIT BREAKER WIRE AND CONDUIT SIZE				
kW	VOLTS	CB AMPS	LUG SIZE	
130	240 1 Ø	600	(3) 2/0 to 400 mcm	
130	240 3 Ø	400	(3) 2/0 to 400 mcm	
130	208 3 Ø	500	(3) 2/0 to 400 mcm	
130	480 3 Ø	225	(1) 600 mcm or (2) 1/0 to 250 mcm	

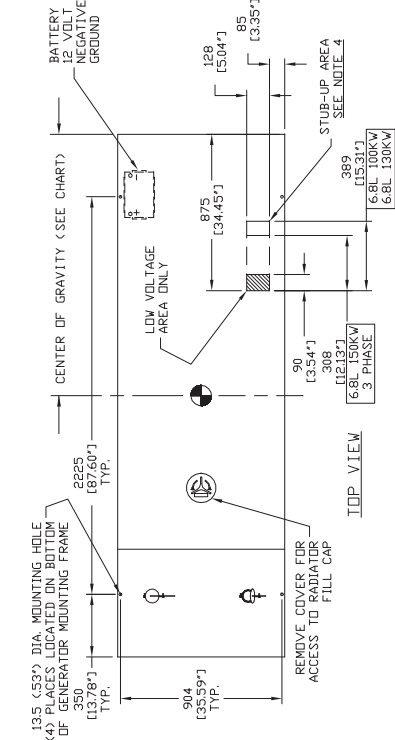
CONTROL FEATURES

<ul style="list-style-type: none"> Two-Line Plain Text LCD Display Mode Switch <ul style="list-style-type: none"> -Auto -Off -Manual/Test (start) Programmable start delay between 10-30 seconds Engine Start Sequence Engine Warm-up Engine Cool-Down Starter Lock-out Smart Battery Charger Automatic Voltage Regulation with Over and Under Voltage Protection 	<p>Simple user interface for ease of operation.</p> <p>Automatic Start on Utility failure. 7 day exerciser. Stops unit. Power is removed. Control and charger still operate.</p> <p>Start with starter control, unit stays on. If utility fails, transfer to load takes place.</p> <p>Standard</p> <p>Cyclic cranking: 16 sec. on, 7 rest (90 sec. maximum duration).</p> <p>5 seconds</p> <p>1 minute</p> <p>Starter cannot re-engage until 5 sec. after engine has stopped.</p> <p>Standard</p> <p>Standard</p>	<ul style="list-style-type: none"> Automatic Low Oil Pressure Shutdown Overspeed Shutdown High Temperature Shutdown Overcrank Protection Safety Fused Failure to Transfer Protection Low Battery Protection 50 Event Run Log Future Set Capable Exerciser Incorrect Wiring Protection Internal Fault Protection Common External Fault Capability Governor Failure Protection 	<p>Standard</p> <p>Standard</p> <p>Standard</p> <p>Standard</p> <p>Standard</p> <p>Standard</p> <p>Standard</p> <p>Standard</p> <p>Standard</p> <p>Standard</p> <p>Standard</p> <p>Standard</p> <p>Standard</p>
------------------------------------------------------------------------------------------------------------------------------------------------------------------------------------------------------------------------------------------------------------------------------------------------------------------------------------------------------------------------------------------------------------------------------------------------------------------------------------------------------------------------	-------------------------------------------------------------------------------------------------------------------------------------------------------------------------------------------------------------------------------------------------------------------------------------------------------------------------------------------------------------------------------------------------------------------------------------------------------------------------------------------------------------------	---------------------------------------------------------------------------------------------------------------------------------------------------------------------------------------------------------------------------------------------------------------------------------------------------------------------------------------------------------------------------------------------------------------------------------------------------------------------------------------------------------	-----------------------------------------------------------------------------------------------------------------------------------------------------------------------------------------------------------------

Single and three phase connections may vary, refer to the owner's manual for specific connection information.

Installation Layout

CENTER OF GRAVITY	
1275 (50.79')	100KW 6. 8L
1520 (58.44')	150KW 6. 8L
1315 (51.81')	150KW 6. 8L



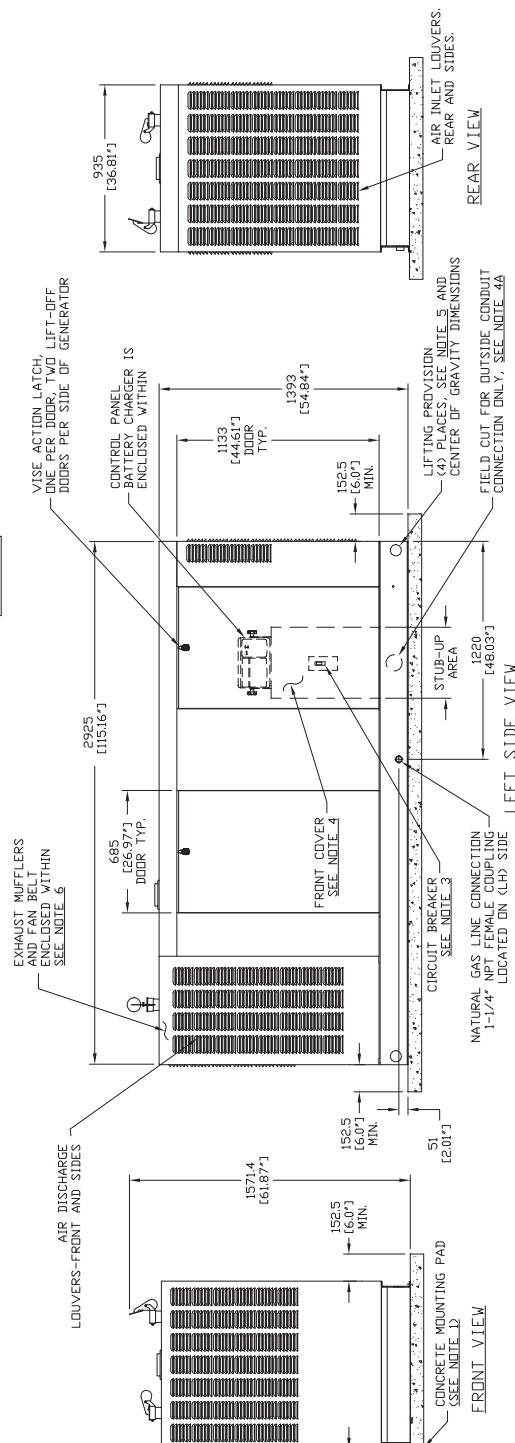
ENGINE/CM	ENCLOSURE MATERIAL	WEIGHT DATA	
		WEIGHT (GROSS) (LBS)	WEIGHT (NET) (LBS)
6. 8L 100KW ALUMINUM	1148 (523)	79 (175)	1067 (486)
6. 8L 150KW ALUMINUM	1284 (582)	79 (175)	1363 (617)
6. 8L 150KW ALUMINUM	1130 (512)	79 (175)	1210 (547)

- NOTES:
- MINIMUM RECOMMENDED CONCRETE PAD SIZE: 1240(48.8') WIDE X 3230 (127.2') LONG. REFERENCE INSTALLATION GUIDE SUPPLIED WITH UNIT FOR CONCRETE PAD GUIDELINES.
 - ALLOW SUFFICIENT ROOM ON ALL SIDES OF THE GENERATOR FOR MAINTENANCE AND SERVICING. THIS UNIT MUST BE INSTALLED IN ACCORDANCE WITH CURRENT APPLICABLE NFPA 37 AND NFPA 70 STANDARDS AS WELL AS ANY OTHER FEDERAL, STATE AND LOCAL CODES FOR MINIMUM DISTANCES FROM OTHER STRUCTURES.
 - CIRCUIT BREAKER INFORMATION SEE SPECIFICATION SHEET WITHIN OWNERS MANUAL.
 - INSIDE STUB-UP AREA FOR AC LOAD LEAD CONDUIT CONNECTION, NEUTRAL CONNECTION, BATTERY CHARGER 120 VOLT AC (5 AMP MAX.) CONNECTION, AND ACCESS TO TRANSFER SWITCH CONTROL WIRES. REMOVE FRONT COVER FOR ACCESS.
 - FIELD CUT HOLE IS ONLY REQUIRED FOR MOUNTING OF GENERATOR ON AN EXISTING PAD.
 - REFERENCE OWNERS MANUAL FOR LIFTING WARNINGS.
 - REMOVE EITHER LEFT OR RIGHT HAND SIDE PANEL TO ACCESS EXHAUST MUFFLERS AND FAN BELT.

SERVICE ITEM ACCESSIBILITY CHART

SERVICE ITEM	ACCESS	
	100KW	150KW
BILL FILL CAP	THRU RIGHT FRONT DOOR	THRU RIGHT FRONT DOOR
DIL DIP STICK	THRU LEFT FRONT DOOR	THRU LEFT FRONT DOOR
DIL FILTER	THRU LEFT FRONT DOOR	THRU LEFT FRONT DOOR
DIL DRAIN HOSE	THRU RIGHT FRONT DOOR	THRU RIGHT FRONT DOOR
RADIATOR DRAIN HOSE	THRU LEFT FRONT DOOR	THRU LEFT FRONT DOOR
AIR CLEANER ELEMENT	EITHER FRONT DOORS	EITHER FRONT DOORS
SPARK PLUGS	BOTH FRONT DOORS	BOTH FRONT DOORS
MUFFLERS	SEE NOTE 6	SEE NOTE 6
FAN BELT	SEE NOTE 6	SEE NOTE 6
BATTERY	THRU RIGHT REAR DOOR	THRU RIGHT REAR DOOR
*GEARBOX FILL & DRAIN	THRU RIGHT REAR DOOR	THRU RIGHT REAR DOOR

*NOTE: EXCLUDING 6. 8L 150KW UNITS
 REFERENCE OWNERS MANUAL FOR PERIODIC REPLACEMENT PART LISTINGS



13.5 (53") DIA. MOUNTING HOLE (4) PLACES, 127 (1/2") DIA. MASONRY ANCHOR BOLTS RECOMMENDED

AVAILABLE ACCESSORIES

Model #	Product	Description
G005633-0	Cold Weather Kit	If the temperature regularly falls below 32° F, install a cold weather kit to maintain optimal battery temperature. Kit consists of battery warmer with thermostat built into the wrap.
G005620-0	Extreme Cold Weather Kit	Recommended where the temperature regularly falls below 32° F for extended periods of time. For liquid-cooled units only.
G006160-0	Paint Kit	Industrial Gray
G005660-0	Scheduled Maintenance Kit	The Liquid-cooled Scheduled Maintenance Kits offer all the hardware necessary to perform a complete maintenance on Honeywell liquid-cooled generators.
G006874-0	Smart Management Module (50 Amps)	Manage large loads by utilizing up to 8 individual Smart Management modules. These devices are installed directly in line with existing appliance wiring for easy installation.
G006510-0	E-Stop	E-stop allows for immediate fuel shutoff and generator shutdown in the event of an emergency.
G007005-0	Wi-Fi LP Fuel Level Monitor	The Wi-Fi enabled LP fuel level monitor provides constant monitoring of the connected LP fuel tank. Monitoring the LP tank's fuel level is an important step in making sure your generator is ready to run during an unexpected power failure. Status alerts are available through a free application to notify when your LP tank is in need of a refill.

Generac Power Systems, Inc.
 S45 W29290 Hwy. 59
 Waukesha, WI 53187
 Tel: 1-855-GEN-INFO
honeywellgenerators.com

0191050SBY-H
 May 2017
 © Generac Power Systems, Inc. All rights reserved.
 Specifications subject to change without notice.
 The Honeywell Trademark is used under
 license from Honeywell International Inc.
 Honeywell International Inc. makes no representation
 or warranties with respect to this product.

Honeywell